

Accessibility Questions: Four Important Priorities


Reviewer: _____

Date: _____

Establishment: _____


Address: _____

Establishment Contact: _____

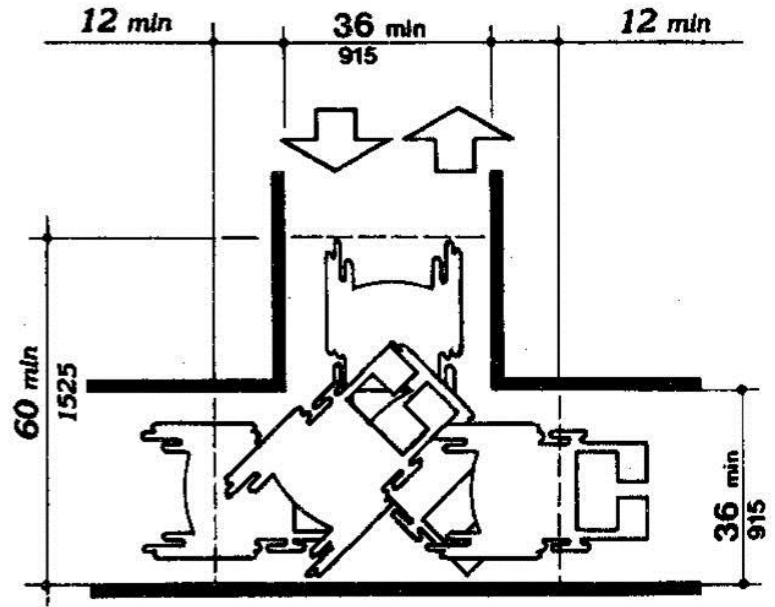
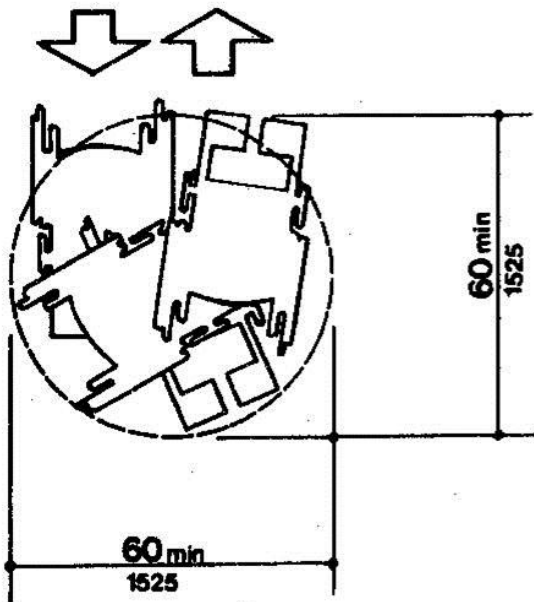
Y	N	N/A	A. Parking and Approach
			1. Is accessible parking marked by the international symbol?  <i>(Note: Signage not necessary if 4 or less parking spots)</i>
			2. Is the route from parking to the business reasonably stable, flat and slip resistant?

Y	N	N/A	B. Entrance
			3. Is there an entrance that does not require stairs?
			4. Can a standard 30" wheelchair get through the doorway (at least 32" wide)?
			5. Is the door threshold less than 3/4 of an inch, about the size of an adult thumbnail?

Y	N	N/A	C. Circulation and/or Seating
			6. Are there places where people in wheelchairs can comfortably sit with their legs under the table; and are these tables equally dispersed throughout the establishment?
			7. Are aisles about 32", to checkouts, route to seating or path to restroom?
			8. Is a portion of sales counter comfortable for a seated person to do business, like to write a check or sign a receipt? <i>(Note: staff handing a person a solid object, like a clipboard to write on is usually an acceptable alternative).</i>
			9. Can individuals maneuver in departments off "main aisles" between racks and displays? <i>(See diagram on back of page)</i>
			10. Is merchandise kept out of clear space and not filled with display racks, garbage cans or other barriers?

Y	N	N/A	D. Restrooms
			11. Are the restrooms marked by the international accessibility symbol? 
			12. Is a larger stall provided with at least 32" door width and two handrails?

Maneuvering in Aisles / Turning Diameters:



Reviewer's Comments:

**Please indicate if business is deemed accessible based on rating scale below:	Yes	No
**If yes, was Recognition Package provided?	Yes	No
If no, be sure comments indicate areas of concern and if any simple fixes could change accessibility rating		

Rating Scale (75% positive score):

If Asked.....	Minimum "Yes" Responses needed to receive Recognition
12 questions	9 "Yes" responses
11 questions	9 "Yes" responses
10 questions	8 "Yes" responses
9 questions	7 "Yes" responses
8 questions	6 "Yes" responses

*NOTE- Items that are marked "N/A" are not used in calculating establishment's final score!

**For additional information about AAW refer to 586.353.0575 or www.warren disability commission.com